

# KAFS Newsletter: No.7.

Kent Archaeological Field School: Winter/Spring 2012



Welcome to the 2012 Spring issue of the Kent Archaeological Field School Newsletter. Last year was a wonderful twelfth season of excavation and courses with the Field School.

Great discoveries were made which will enable us to understand even better the landscape archaeology of Kent. Further work was carried out on the site of the Roman town of Durolevum where we exposed Roman cemeteries south of the A2 which overlaid deep Roman



v-shaped ditches and which may be the circuit of a 1st century Roman marching camp. In the military ditches we found parts of Roman military horse harness dated to the mid-1st century (left).

At Abbey Farm in Faversham, our main dig in 2011, we exposed the foundations of a Roman building with bath-house and courtyard. We will be returning there this Easter to investigate the bath-house, and also the extent of the building with a geophysical survey.

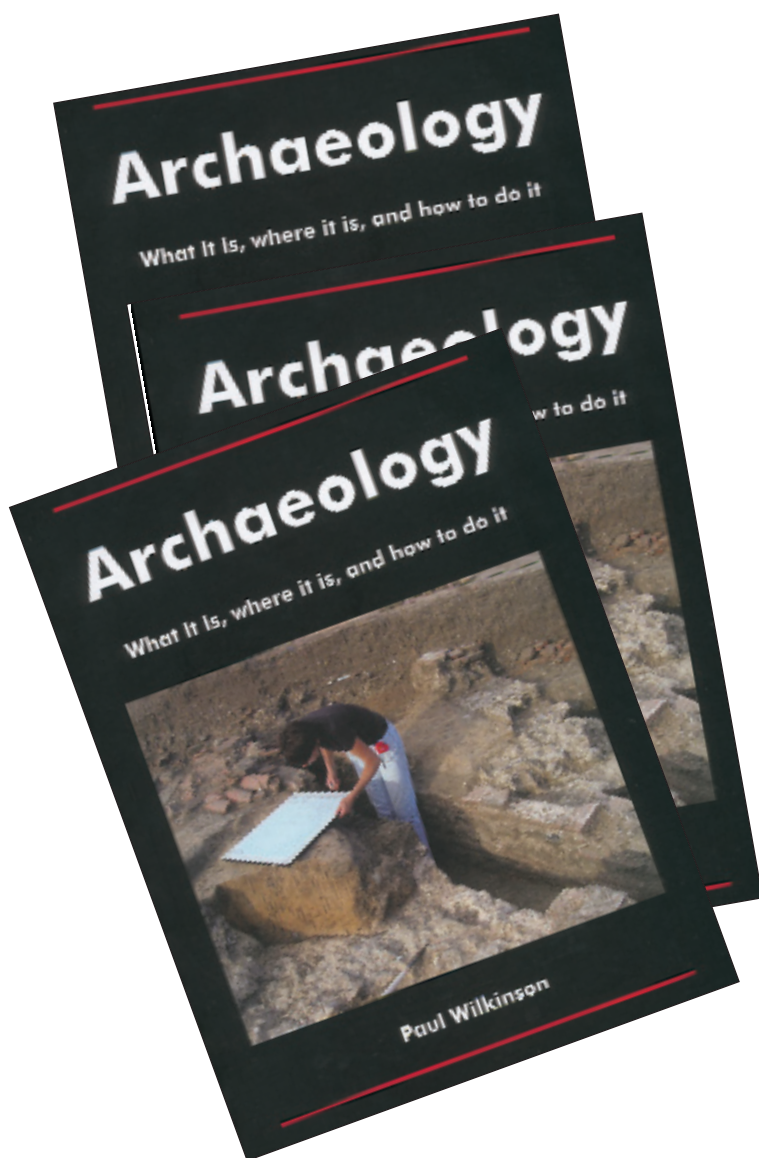
*During Easter 2011 we excavated part of the cemetery of the small Roman town of Durolevum just to the west of Faversham. Under the cemetery were located v-shaped Roman ditches which may be from an marching camp dating from the AD43 Claudian invasion. The skeleton of a young girl was found thrown into a hastily dug grave. She had been killed by a sword thrust to the back of the head.*



Kent Archaeological Field School,  
School Farm Oast, Graveney Road, Faversham,  
Kent, ME13 8UP. Tel: 01795 532548.  
E-mail: info@kafs.co.uk

# FIELD SCHOOL BOOKS

'Archaeology' book is a best seller!



**This book by Paul Wilkinson**, the director of the Field School, launched in 2009 and was an instant success. The book is a distillation of what is taught at the Field School and many students will find it invaluable in their studies. It is in full colour and covers subjects which are essential reading for today's student of archaeology.

Mick Aston says the book is *"A very useful basic introduction to archaeology"* whilst Francis Pryor says *"I wish this book had been available when I started out in archaeology back in the 1960s. It tells you everything you need to know in order to decide what sort of archaeology you'd like to learn more about"*. To order the book at £11 (including postage) fill in the form opposite.

### June 4th to June 16th, Excavation of the Roman Palace at Oplontis, Naples

Selected members of KAFS will be working with the University of Texas on a research excavation at the world famous palace of Nero's wife Poppaea and the adjacent Shopping Emporium 'Villa B'. The palace was overwhelmed by Vesuvius in AD79 and buried. This is a unique opportunity to join



that small select band of archaeologists to have excavated at Oplontis/Pompeii. Cost is £175 per week. Accommodation and meals not included. For further details email Paul on [info@kafs.co.uk](mailto:info@kafs.co.uk). Places are limited.

#### Order Form

If you would like a signed copy please put the name required at the bottom of the coupon.

Your Name.....

Address.....

E-mail address.....

I enclose a cheque (payable to KAFS) for £11 which includes post and packaging  
Name in book.....

# ABBEY FARM EXCAVATION

ROMAN VILLA AT EASTER APRIL 4TH-22ND

The 2011 investigation of Abbey Fields in Faversham was not foreseen. Our planned site was north of the A2 near Syndale Park in Faversham. Unfortunately the gathering of the harvest had been delayed by a dry Spring and so we switched to a field where we had discovered numerous Roman tiles and pottery as part of the Swale Survey in 1999. Our first trench focussed on where most of the tile was found and we immediately hit the massive well-preserved foundations of a large Roman building. Further investigation by up to fifty trainees uncovered a building of about 45 metres in



length and with an attached courtyard on the north side and a potential bath-house on the south-west side of the building. An almost complete pottery jar found in situ on the floor surface of the bath-house dates from the mid 3rd to early 4th centuries. The entire building had been demolished and levelled and on to

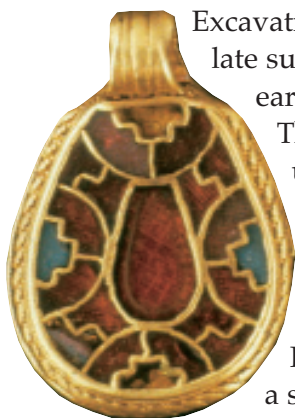


this platform a number of timber buildings with cill beam slots had been constructed. The pottery found in these slots has been identified as Late Roman Grog-tempered ware dating to the early 5th century. The site was later developed in the medieval period as part of the Faversham Abbey complex and the adjacent 12th and 13th century barns date from this period.

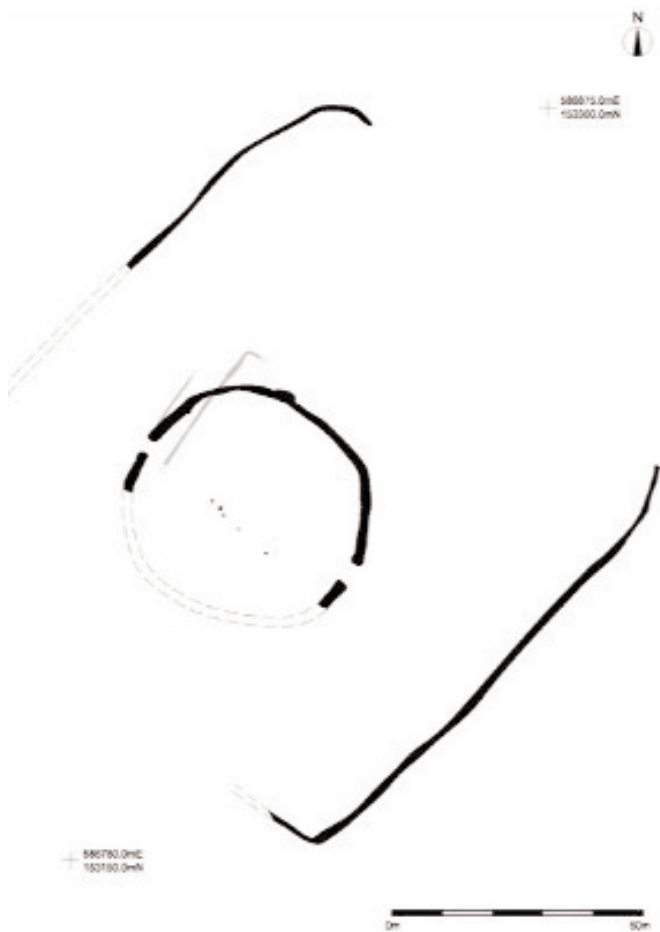
To the north of the barns a Roman villa was partly excavated by Brian Philp in 1968 which opens up the intriguing possibility of two Roman villa buildings on the same villa estate. Based on some of the best farmland in Kent it seems this field had attracted farmers from the Iron Age, Roman, Saxon and Medieval periods.

*The picture (left) shows how close to the surface the Roman remains are, just 100mm (4 inches) of soil cover the demolished Roman building. The beam slots of the later 5th century buildings can be seen in the background. The picture (top) shows our archaeological trainees in August 2011.*

# FIELD SCHOOL COURSES



Excavation near Hollingbourne in the late summer of 2011 revealed a ritual earthwork that may be a 'henge'. These earthworks are not usually found in the south-east and can date from the Late Neolithic or Copper Age (3000-2000BC). The ring ditch (below) faces on to the Pilgrims Way and is located on a small rise in the ground. It is also surrounded by water on three sides. It is almost 50m across with two entrances on the north-west and south-east (below, right).



*The summer excavation at Hollingbourne will concentrate on the 'henge' (above). We need to excavate the central enclosed area of the ring ditch to try to understand what this space was used for.*

*Of equal importance is the large area enclosed by the outer horn ditches (above) and why it is open where it faces onto a presumably prehistoric trackway now called the Pilgrims Way of 'Greeway'.*

The site was found through the study of aerial photographs and talking to the farmer who had found flint tools and Anglo-Saxon artefacts. Two parallel straight ditches were seen apparently preceding the ring ditch on the west, and two enclosing lengths of ditch were also exposed.

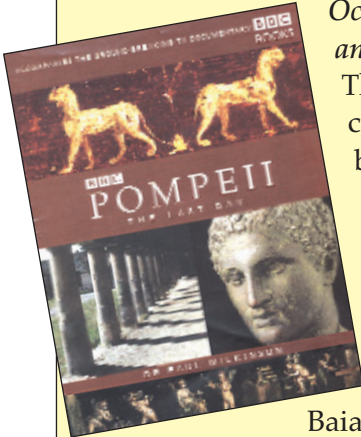
A small section excavated into the ring ditch near the western causeway produced quantities of charcoal, bone and pottery, and dense concentrations of broken pottery lay on the surface of both ditch terminals. The ditch was 3m wide at the top, with sides that sloped steeply to a narrow base about 80cm down.

The apparent absence of henges in the south-east has been much debated by archaeologists since the first probable example was excavated at Ringlemere, near Sandwich in Kent, after the discovery of a Bronze Age gold cup in 2001. The location of the 'henge' at Hollingbourne is of some significance and will be explored further in 2012 with landscape studies. Already a large number of unknown Bronze Age barrows have been identified in the near vicinity.



# KAFS NO-FRILLS TRIPS

## Pompeii and the Bay of Naples, Roman Provence, and Roman Germany



*Oct 26th, 27th, 28th. Pompeii and the Bay of Naples*

This trip is for the cognoscenti who have been before but want to spend more time at Pompeii. It includes a full day of guided tours of the well-preserved Roman town of Pompeii. We also visit Herculaneum, Cumae,

Baiae, Pozzuoli, Oplontis, Boscoreale, the villas at Stabiae, and the Naples Archaeological Museum. Cost £150

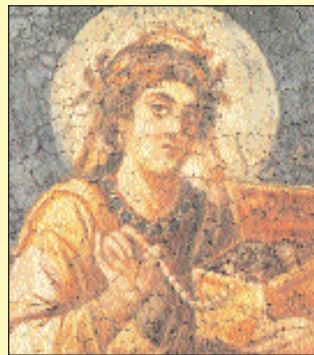


*September 21st, 22nd, 23rd, 24th Roman Provence*

A trip without equal-the marvellous imperial remains of Arles including the



amphitheatre, theatre, baths, circus and museum. The amazing aquaduct of Pont du Gard, the splendid Roman buildings of Nimes. Travel can be by air or by train direct from London. Full details are available on our web site. Cost £150 per person for the trip.



*December 1st to 6th. Winter Trip to Roman Germany-the Edge of Empire*

A tour to the heart of Roman Germanica. Who can forget the opening scene of the film Gladiator, set in

the Teutoburg Forest? Our tour begins in Cologne, Germany's oldest city on the very edge of Empire. We move on to Xanten and visit the rebuilt Roman town and then on to Saalburg Roman fort high in the German forests where Varus led his legions to disaster. At Trier we will enjoy the Christmas markets and visit the Porta Nigra, the Cathedral, The Roman Baths, Episcopal Museum, the Constantine Basilica, and the Rheinisches Landesmuseum. This is a tour where everything is included- flights, hotels and meals provided by by KAFS and the 'In-Time' Agency.

Price £1145 per person (single £1,198).

# FIELD SCHOOL COURSES

---

*KAFS courses are designed to be a practical 'hands on' approach to learning about archaeology. You will feel comfortable even if you are a beginner. To book, fill in the form on page 8. For further details of all courses and membership, see: [www.kafs.co.uk](http://www.kafs.co.uk)*



*March 17th & 18th, Field Walking and Historic Map Analysis*

Walking across the landscape and recording features seen on the ground is fundamental to most rural archaeology. This weekend course explains how to recognise and record artefacts found within the plough soil. These objects include flint tools, building material, pottery, glass and metal artefacts. We will consider the importance of historic map analysis as part of this procedure. KAFS members free. £50 for non-members.

*Easter, April 4th to April 22nd, Investigation of a Roman villa in Faversham and Training Week.*  
An opportunity for KAFS members to join in investigating the layout of a newly discovered large Roman villa at Abbey fields. Non-members £35 per day, members £20 a day.

*May Bank Holiday, May 5th-8th, Investigation and evaluation of a group of Bronze Age barrows at Hollingbourne in Kent.*

An opportunity to participate in the evaluation of three Bronze Age barrows on the North Downs. The Field School walked this site in 2011 and the results indicate activity at this site from Prehistoric through to Early Medieval. KAFS members fee £30 a day, non-members £35 a day.



*June Bank Holiday, June 2nd-5th, An Introduction to Archaeology*

A practical four-day Bank Holiday course. We will survey the extent of a Roman villa, its access

roads and field systems, and sample, through survey and field-walking the extent and quality of survival of the Roman infrastructure. This course is ideal for newcomers and families new to archaeology who wish to understand the archaeological process. We shall look at how archaeological sites are discovered and find out how different types of finds, such as pottery, bones, flints and metalwork reveal the lives of former peoples. The four-day Bank Holiday course costs £75 if membership is taken out at the time of booking, Non-members £100



*May and June weekends, 12th, 13th, 19th, 20th, 26th, 27th, and June 2nd, 3rd, 4th, 5th.*

Weekend and Bank Holiday opportunities to participate in the investigation and evaluation of the Roman villa in Faversham. Cost for the weekend is £30 to members and £50 to non-members.

*July 7th, 8th, Survey for Archaeologists*

A course on the theory and practise of archaeological survey. Methods from basic optical site levels to laser technology and GPS will be taught. Practical exercises will take place at a Roman building in Faversham where a Geophysical Survey will be taking place. Cost for the weekend is £30 for members, £75 for non-members.

*August 4th to 19th, Investigation and excavation of Prehistoric Archaeology on the North Downs at Hollingbourne in Kent*

The site of a Prehistoric 'henge', Bronze Age barrows and an Iron Age cemetery form part of

# FIELD SCHOOL COURSES

---

the features of this ritual landscape we will be investigating. This is a large scale research landscape investigation and pottery washing, soil processing are essential ingredients and will be conducted on site. Detailed planning and mapping of contexts and features will be to the highest standards.

Beginners are welcome to the *Training Course on the Monday August 13th to Friday 17th* course, with the option to continue for further days (same daily fee applies). Experienced participants may book the days they wish.

Topics taught each day are: Monday: History of the Site & Why dig? Tuesday: Excavation Techniques; Wednesday: Site Survey; Thursday: Archaeological Recording; Friday: Small Finds Recording.

KAFS member's special fee £30 per day, non-members £35 per day. Training week £100 if membership is taken out at the time of booking.

## *September 1st and 2nd, Bones and Burials*

Osteo-archaeology is the study of human remains. The course will be led by Dr Chris Deter from the Dept of Anthropology, University of Kent. The course will cover the on-site recording of human remains and how they can reveal information about the person's age, sex and state of health. Excavated skeletons will be available for study and analysis in practical sessions.

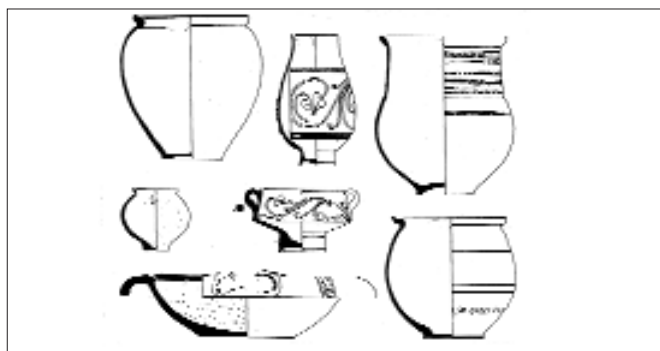
Cost for the weekend is £75 for non-members and KAFS member's special fee of £64.



*September 21st to 23rd, Field Trip to Roman Provence (see page 5 for details)*

## *September 29th and 30th, How to identify Stone Tools and Prehistoric Flints*

A course on the identification of prehistoric flint and stone with Hugo Anderson-Whymark who will explain the technology used to produce prehistoric tools from all periods. On Sunday there will be a practical exercise on field walking for lithics and flint knapping with John Lord, one of the country's leading practitioners of the craft. Cost for the weekend is £75 for non-members and KAFS member's special fee of £64.



## *October 6th and 7th, Archaeological Drawing*

A beginner's and refresher course introducing participants to drawing archaeological artefacts. There will be practical sessions each day demonstrating how to illustrate pottery, bone and metal. Course led by Jane Russell, who was senior illustrator of the UCL Field Archaeology Unit.

## *October 13th and 14th, How to identify Roman pottery with Malcolm Lyne*

A course for those who want to distinguish the many types of roman pottery found on British archaeological sites. On both days there will be a 'hands-on' session followed on Sunday by a visit to the Ospringle Museum to view with



Malcolm Lyne the Roman pottery from the adjacent Roman small town of Durolevum. Cost for the weekend is £75 for non-members and KAFS member's special fee of £64.

# FIELD SCHOOL COURSES

*Even more courses in the Autumn.*

*For further details of all courses and membership, see: [www.kafs.co.uk](http://www.kafs.co.uk)*



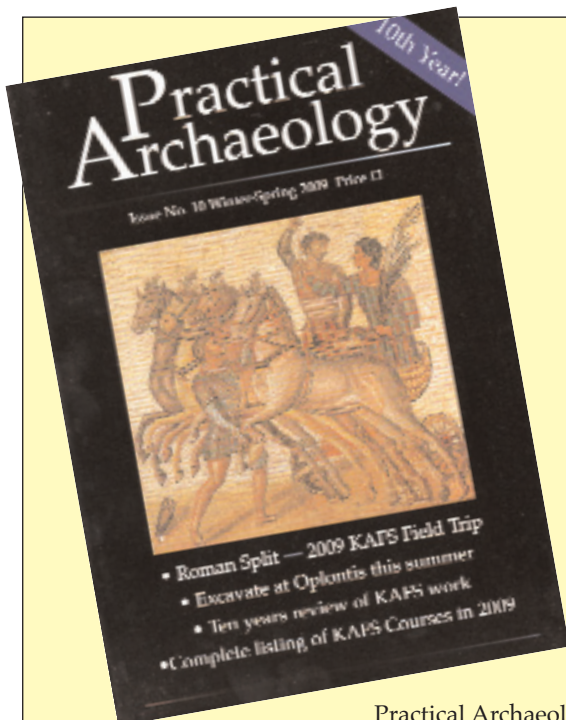
*October 26th to 28th, Field Trip to Pompeii, Herculaneum, and the Bay of Naples, Join us in a tour of the great sites, cost £150 for entrance fees, transport around Naples and guiding*

*November 10th and 11th, Public Relations and Public Affairs for the Archaeologist with Simon Elliot  
Times are tough for archaeologists across austerity Britain at a time when fieldwork and*

research budgets are being cut across the board. In such an environment harnessing the power of the media and the world of politics to gain popular and official support can provide the

archaeologist with an advantage. Cost for the weekend is £50 for members, £75 for non-members.

*December 15th, Gaul for the day Join us for a day trip to Calais to see the Roman remains, lunch in Boulogne and an opportunity to discuss plans for the KAFS in 2013, and also to stock up with 'Duty free'  
Email us to express an interest.*



*To become a member and enjoy a 10% discount on courses plus a free subscription to*

*Practical Archaeology published annually. Tick the box on the right and the forms will be sent to you, or download them from our website — [www.kafs.co.uk](http://www.kafs.co.uk).*

## KAFS COURSE BOOKING FORM

Name of Course.....  
 .....  
 Date of Course.....  
 Your Name.....  
 Address.....  
 .....  
 Postcode.....  
 E-mail address.....  
 I enclose a cheque (payable to KAFS) for.....  
 Please send me a KAFS membership form

Return this form to:-  
 The Kent Archaeological Field School,  
 School Farm Oast, Graveney Road, Faversham,  
 Kent ME13 8UP. Tel: 01795 532548  
 Website: [www.kafs.co.uk](http://www.kafs.co.uk) e-mail: [info@kafs.co.uk](mailto:info@kafs.co.uk)  
 Please note that courses are bookable in advance only and are non-refundable or transferable. Member's 10% discount does not apply to special fees and field trips. Children over 14 and under 16 years old are welcome on courses, but must be accompanied by an adult; under-16s are not allowed on excavations.